



Training on
Roads for Water and Resilience



SOCIAL ENGAGEMENT PROCESSES

Institutional cooperation

Need for close cooperation among all actors for road development and watershed management/agriculture

- Integrate road and watershed programs
- Community engagement
- Capacity building
 - Short courses
 - Tools (run-off models)

Importance of local knowledge



In most cases, roads are imposed on the landscape and on the people without much local consultation

Increased community participation and inter-sectoral collaboration into the design will lead to more adapted structures and lower construction and maintenance costs.

Design represents a technical activity reserved for experts from the *woreda* offices, regional or national roads departments.

Change procedures in road development

- Manuals: include social engagement issues and water harvesting
- Investment budgets: include budget adjustments for water-friendly road design
- Maintenance budgets
- Cooperation

Change in approaches

Change approach from adaptation after road is constructed to participatory planning, implementation and evaluation with community

Consultative

Collaborative

Collegial

From re-active to proactive approaches

Awareness and sensitization

- Awareness raising on the environmental **problems** derived from the road at policy/planning levels
- Awareness raising on the opportunities to transform problem into a **solution** through road water harvesting at all levels (from donors to community)
- Important to disseminate the results from efforts taking place in Tigray

Learning group

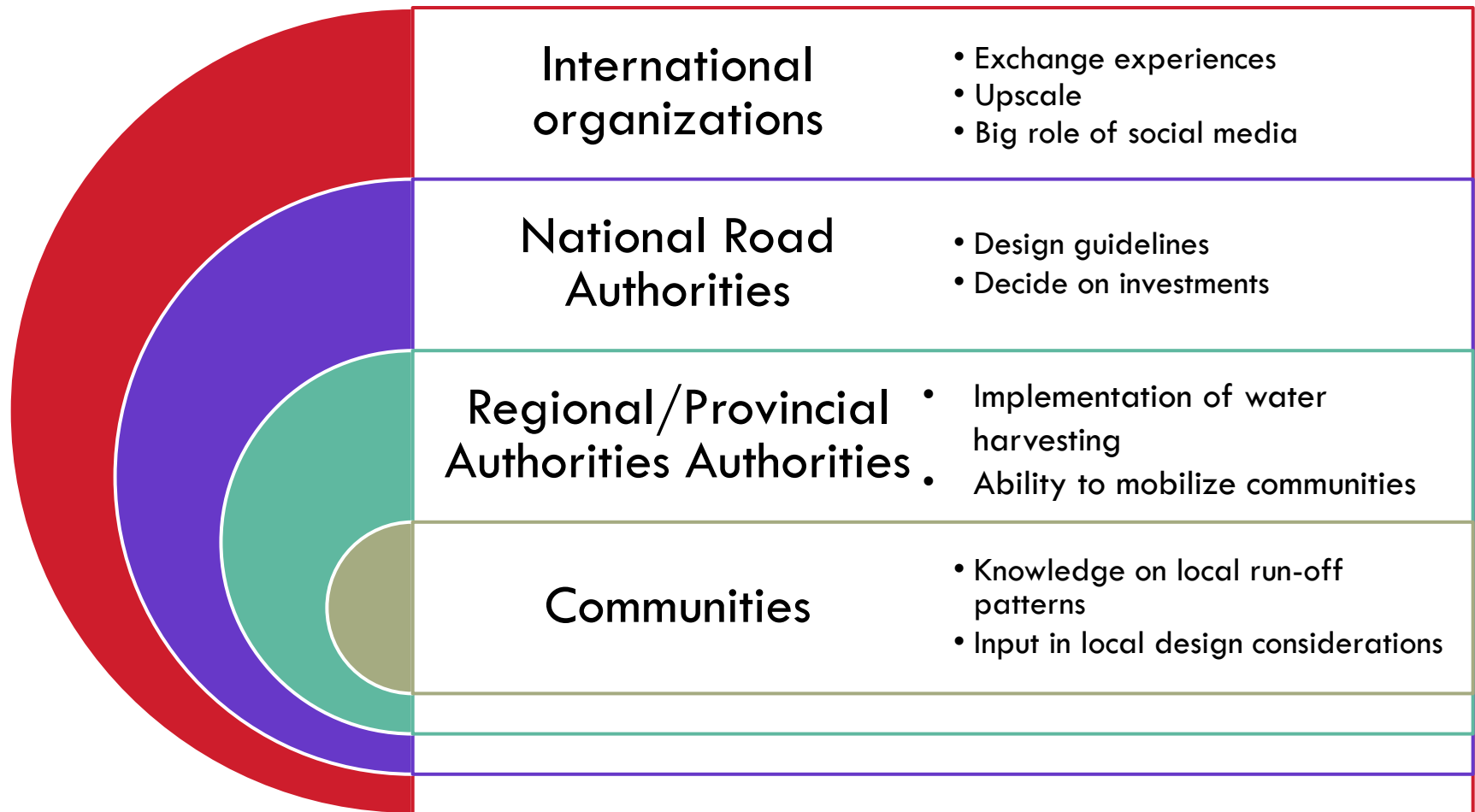


Create multisectoral Learning Group in the Horn of Africa

Bring together roads, water and agricultural Authorities, experts and practitioners

Prepare guidance notes, co-organize workshops, exchange visits and disseminate results

Main actors



Way forward

Planned Activities	Actors		Collaborators	Communication strategies
	Role	Responsibility		
Inventory of Best practices in RWH				

Supported by:



Developed by:

