

# RoadSide Spring Protection (RoSPro)

Through co-design and participatory approaches with local stakeholders and communities, we implement interventions at two levels: (1) at the roadside spring outlets, where springs interact with roads, and (2) at the recharge areas of the springs, securing both water resources and sustainable road infrastructure. To foster community engagement throughout every stage of the project—from design to implementation—we have established spring user committees.

## BACKGROUND



Dhankuta district, Nepal



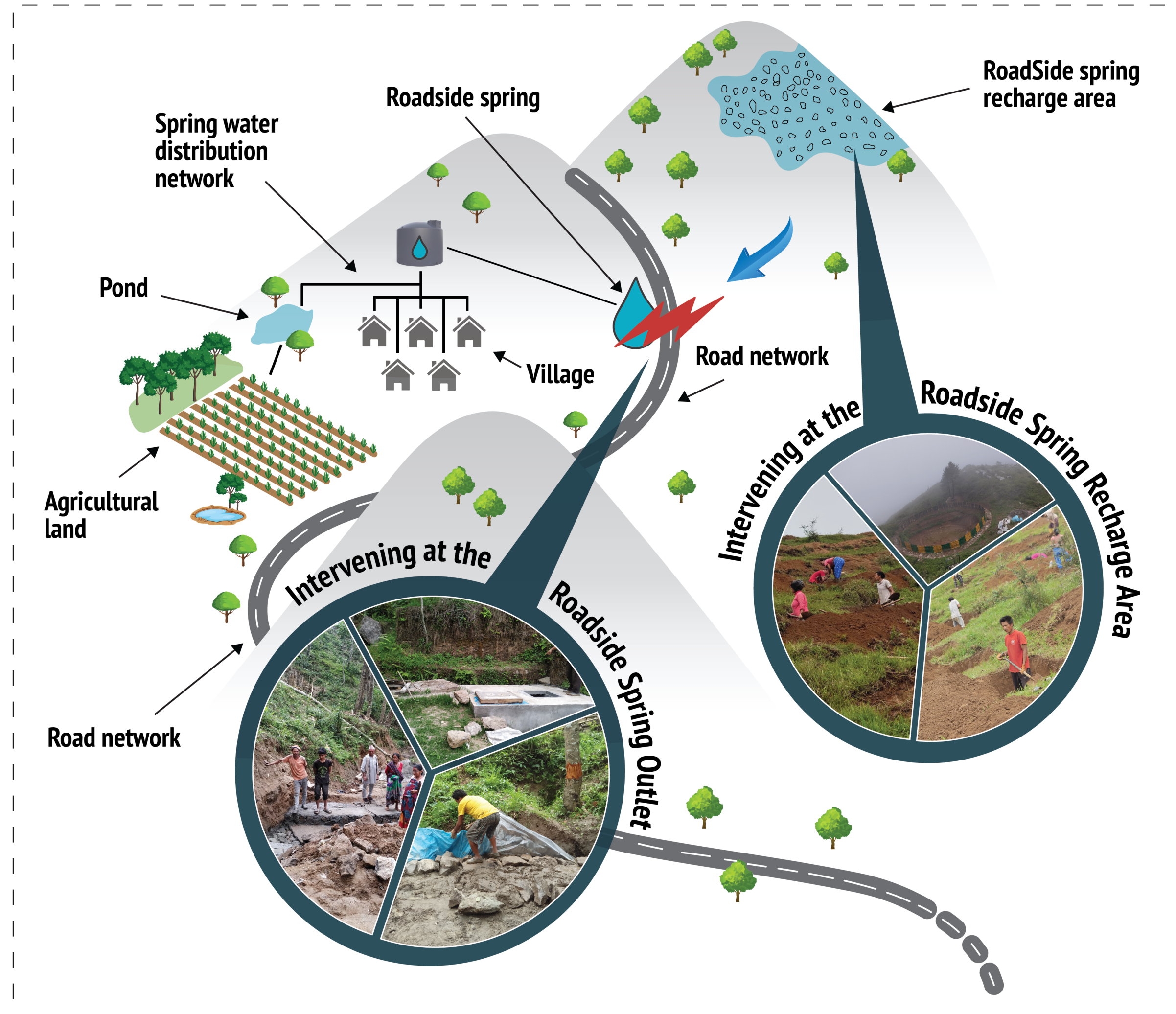
Spring water is the primary source of water



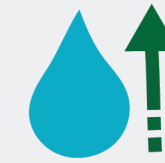
Spring water decline by %30



Road construction  
One of the factors related to spring decline



## IMPACT



Increased water availability



Less road maintenance costs



Building technical experience at local level



Time saved to collect water for women