

RoadSide Spring Protection (RoSPro)

Through co-design and participatory approaches with local stakeholders and communities, we implement interventions at two levels: (1) at the roadside spring outlets, where springs interact with roads, and (2) at the recharge areas of the springs, securing both water resources and sustainable road infrastructure. To foster community engagement throughout every stage of the project—from design to implementation—we have established spring user committees.

BACKGROUND



Dhankuta district, Nepal



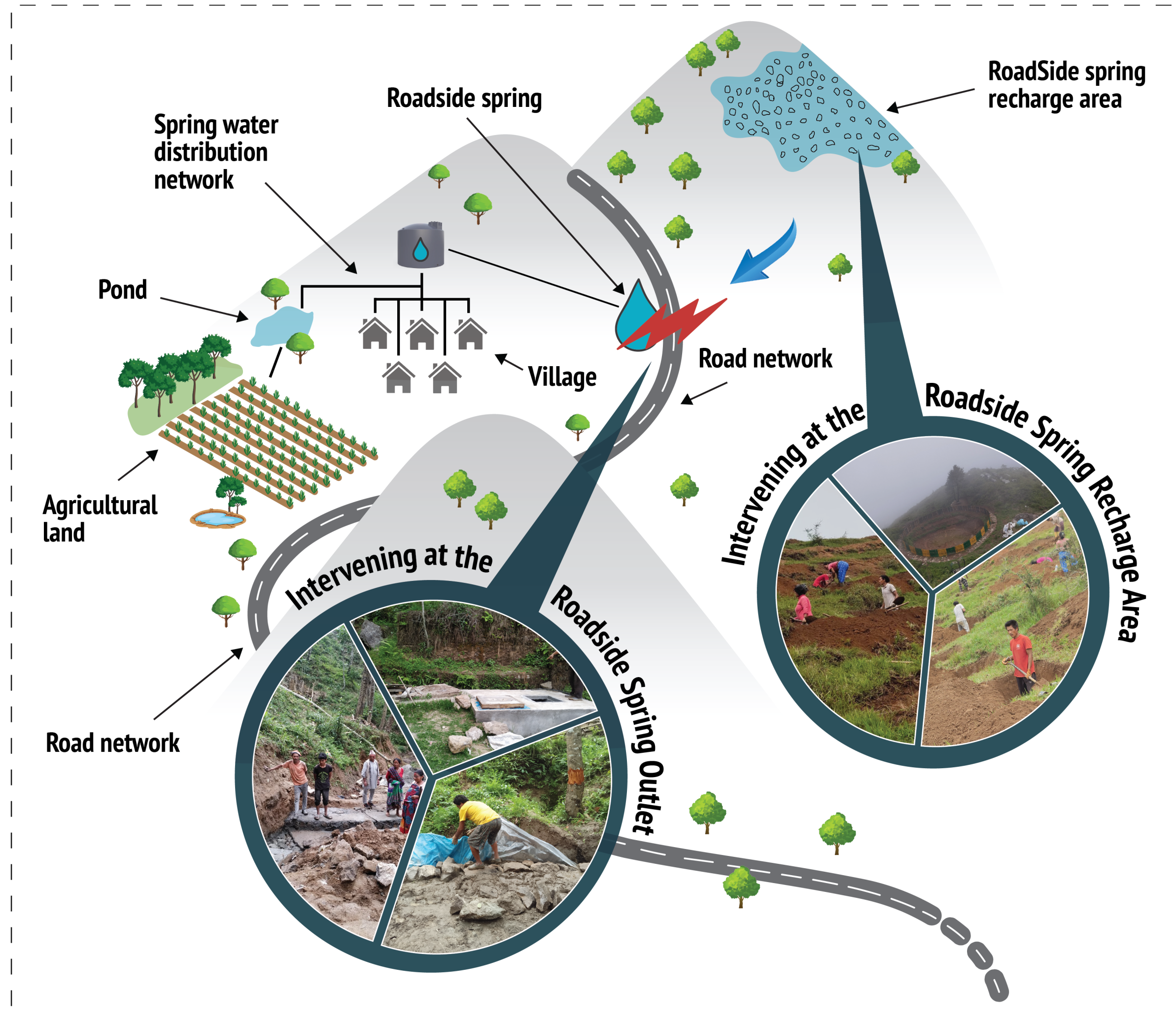
Spring water is the main source of water for domestic use and small-scale agriculture



Spring water decline by 30%



Road construction that ignores local hydrogeology can open up and disrupt springs, leading to their drying



IMPACT



Roads quality improvement



Enhanced water availability



Time saving for women



Agricultural enhancement



Skillset Developed at Community Level



Municipality engineers gained knowledge on holistic roadside spring protection